

REGIONAL INTERESTS DEVELOPMENT APPROVAL (RIDA) -

RPI22/005 Aeon – Walford Creek Extended (Given under section 53 of the *Regional Planning Interests Act 2014*)

Date: 29 September 2022

Description of the land

Real property description: Lot 11 SP320130

Local Government Area: Burke Shire Council

Approved resource activities

The approved resource activities are set out in Table 1 below.

Definitions of the approved resource activities are provided in Table 2 below.

The locations of the approved drill pads are provided in Table 3 below.

This development approval authorises impacts on the Gulf Rivers Strategic Environmental Area by the approved resource activities.

Table 1: Approved resource activities: Aeon – Walford Creek Extended

Area of regional interest	Location	Resource activity	Area of disturbance (hectares)
Gulf Rivers Strategic Environmental Area	Lot 11 SP320130	Two drill pads	0.06
		Access tracks	0.43
Total disturbance area			0.49 ha

Table 2: Definitions of approved resource activities

Resource activity	Definition
Drill pads	<ul style="list-style-type: none">Two drill pads, used to provide stable platforms for the reverse circulation and diamond tail drilling procedureEach drill pad is 20m x 15m (0.03 ha) in areaContain the drill rig, rod sloop, core trestle, sumpEstimated drillhole depths:<ul style="list-style-type: none">EXP172 – 700mEXP178 – 210m
Access tracks	<ul style="list-style-type: none">Approx.3m wide cleared access tracks to each of the drilling sites, to facilitate vehicular access of drilling equipment and personnel

Table 3: Location of drill pads

Drillhole	Easting	Northing
EXP172	225600	8031700
EXP178	224002	8030760

Coordinates are GDA94 MGA Zone 54

Regional interests conditions

A person who is the holder of, or is acting under, this RIDA must not contravene a condition of this approval.

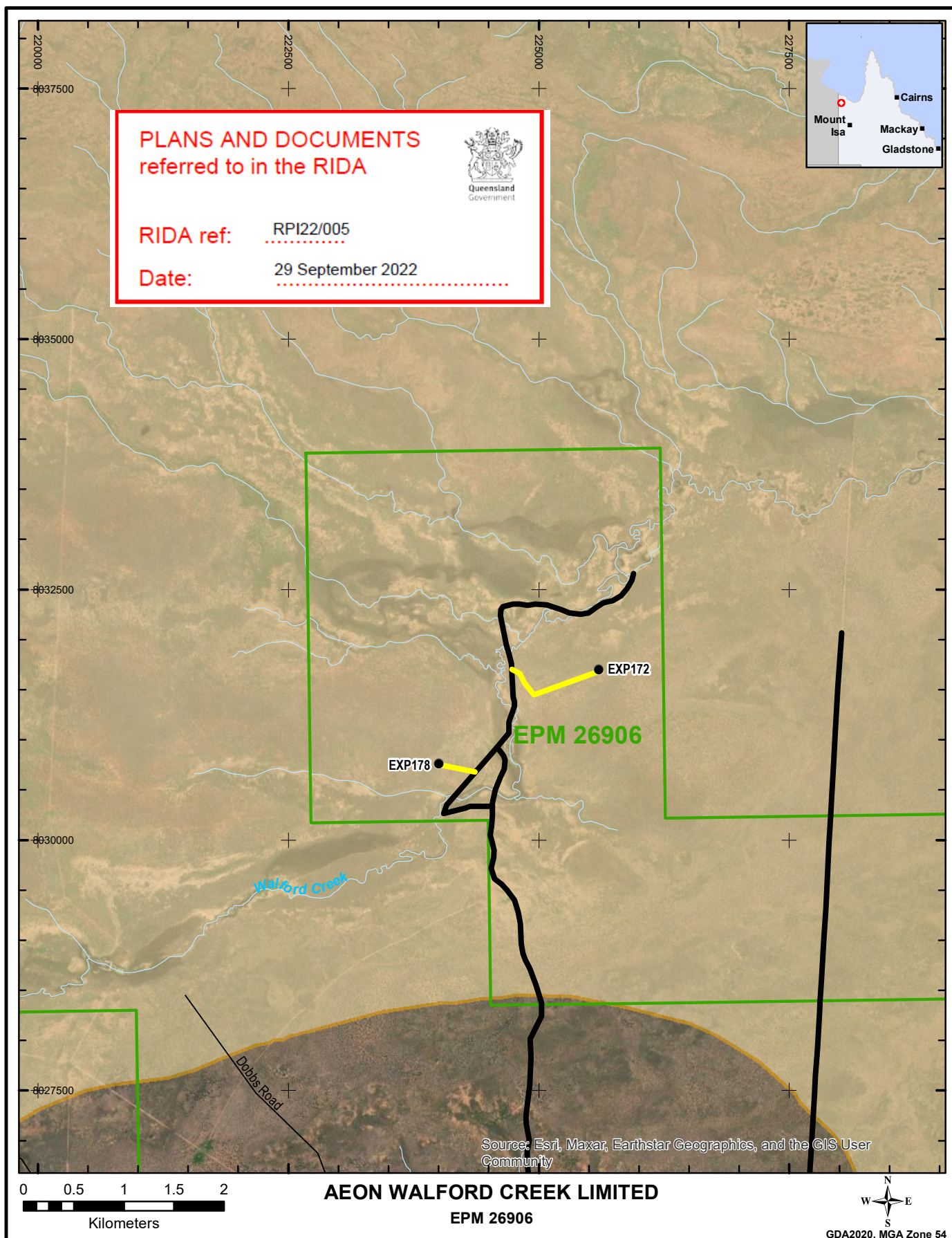
Condition number	Condition	Timing for condition
1.	Carry out the approved resource activities and disturbance of land in the Gulf Rivers Strategic Environmental Area generally in accordance with: <ul style="list-style-type: none"> (a) the resource activities identified in Table 1: Approved resource activities (b) the resource activities defined in Table 2: Definitions of resource activities (c) the locations of the drill pads in Table 3: Location of drill pads (d) the stamped approved plan: <ul style="list-style-type: none"> (i) Figure 1 Sheet No. RTPL_ARD_AEO001_MAP_0012_A dated 14/06/2022, prepared by Ardent Group Pty Ltd (Attachment 1). 	At all times.
2.	No disturbance from the resource activity is permitted in riparian areas, and the banks of a watercourse, lake, spring or wetland.	At all times.
3.	No clearing of native vegetation is permitted within or adjoining watercourses, lakes, wetlands or springs unless otherwise authorised under the <i>Water Act 2000</i> or any other relevant legislation.	At all times.
4.	Construct access tracks to allow for the natural passage of water.	At all times.
5.	<ul style="list-style-type: none"> (a) No activities are to be undertaken during the regional wet season (December to March). (b) Activities undertaken in November and April may only be undertaken with a favourable weather forecast which will not result in flow events occurring in drainage lines within the activity area. 	As indicated.
6.	Develop and implement erosion and sediment controls in accordance with the book titled <i>Best Practice Erosion and Sediment Control. International Erosion Control Association (Australasia)</i> which: <ul style="list-style-type: none"> (a) allows stormwater to pass through or around the site in a controlled manner and at non-erosive flow velocities (b) minimises soil erosion resulting from wind, rain and flowing water (c) minimises the duration that disturbed soils are exposed to the erosive forces of wind, rain and flowing water (d) minimises work-related soil erosion and sediment runoff 	At all times.

Condition number	Condition	Timing for condition
	(e) minimises negative impacts to land adjacent to the resource activities.	
7.	<p>Contaminants from the resource activities must not be directly or indirectly released to a watercourse / wetland / drainage feature or to the bed or banks of a watercourse / wetland / drainage feature or to groundwater.</p> <p><i>Note: Contaminants mean waste contaminants as defined in Schedule 9 of the Environmental Protection Regulation 2008.</i></p>	At all times.
8.	<p>(a) Restore disturbance areas associated with access tracks to a pre-disturbance condition, other than those disturbance areas associated with access tracks left in place for future use, subject to agreement with the landowner.</p> <p>(b) Restored disturbance areas referred to in (a) must achieve stable landforms that perform in the same hydrological way as they did prior to disturbance.</p> <p>(c) Provide records of any agreement referred to in (a) to the chief executive at RPIAct@dasilgp.qld.gov.au</p> <p><i>Note: The records of agreement provided to the chief executive must state the application reference number, being RPI22/005.</i></p>	<p>(a) and (b) Following completion of the resource activity but prior to the onset of the wet season.</p> <p>(c) Within one month of the agreement being reached.</p>
9.	<p>(a) Decommission drill holes in accordance with the standard conditions of the document 'Eligibility criteria and standard conditions for exploration and mineral development projects – Version 2' (effective 31 March 2016).</p> <p>(b) Provide records of any agreement to the chief executive at RPIAct@dasilgp.qld.gov.au</p> <p><i>Note: The records of agreement provided to the chief executive must state the application reference number, being RPI22/005.</i></p>	<p>(a) As stated in the document 'Eligibility criteria and standard conditions for exploration and mineral development projects – Version 2' (effective 31 March 2016).</p> <p>(b) Within one month of the agreement being reached.</p>
10.	<p>Retain records of the pre-disturbance, post-reinstatement and post-restoration condition of disturbance areas and provide these to the chief executive (RPIAct@dasilgp.qld.gov.au application reference number RPI22/005), demonstrating that the impacted land within the Gulf Rivers Strategic Environmental Area has been returned</p>	Within three months of completing all post-restoration works.

Condition number	Condition	Timing for condition
	<p>to its pre-disturbance condition. Such records must include:</p> <ul style="list-style-type: none"> (a) photographs of the pre-disturbance site conditions (b) photographs of the post-reinstatement site conditions (c) photographs of the post-restoration site conditions (d) evidence with the records (date and GPS stamped) required by parts (a) to (c) of this condition. <p><i>Note:</i> '<i>disturbance</i>' - means any impact to the landscape, vegetation, air quality, hydrology, habitat, or water quality that has been directly or indirectly caused by human activity associated with the resource activity.</p> <p><i>'pre-disturbance'</i> - the condition of the land before any resource activities occurred.</p> <p><i>'post-reinstatement'</i> - following the completion of the resource activity, being the return of the soil to its previous profile, topography and drainage</p> <p><i>'post-restoration'</i> - this is the point at which the ground cover has been established and ponding, erosion, subsidence, etc has been dealt with (being a longer process than the reinstatement phase).</p>	
11.	<ul style="list-style-type: none"> (a) All complaints received, and resulting actions taken, about the impact of the approved resource activities on the environmental attributes in the Gulf Rivers Strategic Environmental Area must be recorded. The record must include: <ul style="list-style-type: none"> (i) name, address and contact number of the complainant (ii) time and date of complaint (iii) reasons for the complaint (iv) investigations undertaken (v) conclusions formed (vi) actions taken to resolve the complaint (vii) any abatement measures implemented (viii) person responsible for resolving the complaint. (b) Provide records of any complaints received and recorded in accordance with this condition to the chief executive at RPIAct@dasilgp.qld.gov.au <p><i>Note: The record of complaint provided to the chief executive must state the application reference number, being RPI22/005.</i></p>	<ul style="list-style-type: none"> (b) At all times. (c) Within 60 business days of receipt of a complaint.
12.	A full copy of the regional interests development approval must be kept on-site and available to any person(s) contracted to undertake the approved resource activities.	At all times.

General Advice

It is the applicant's responsibility to ensure all relevant approvals and licenses are obtained from the applicable Local, State, and/or Federal Authorities prior to works commencing on site.



	Exploration Activities Areas of Regional Interest Strategic Environmental Area	EPM Boundary Street/Local Road Minor Watercourse Existing Pastoral Track Proposed Track (3m width) Proposed Drill Pad (20m x 15m)	Areas of Regional Interest Strategic Environmental Area	
	Figure 1 Sheet No. RTPL_ARD_AEO001_MAP_0012_A	Drawn By: Chris Schlebusch Requested by: Jacob Arnold Date: 14/06/2022	Data sources: ©State of Queensland, Department of Resources ©Geoscience Australia	