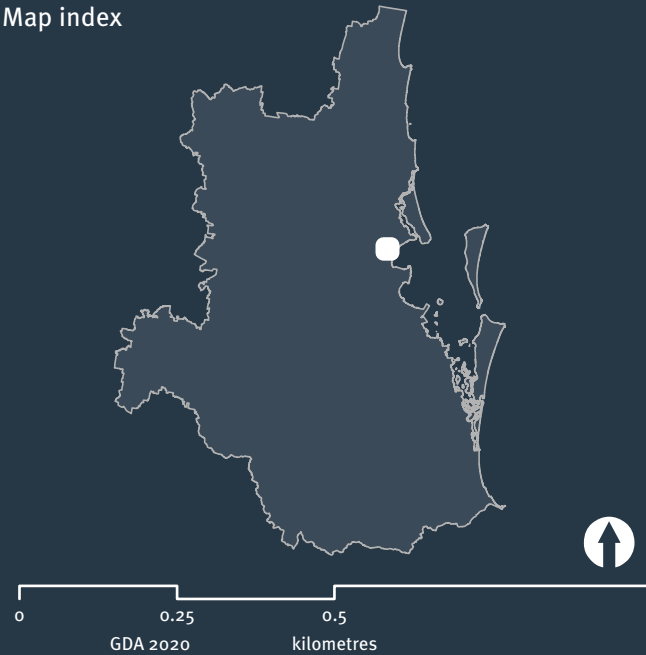


ShapingSEQ 2023
South East Queensland Regional Plan - Regulatory Provisions

SEQ Development Area
Burpengary East SEQ Development Area April 2025
Map SEQ RP 2. 2

- Legend**
- SEQ Development Area
 - Category 1
 - Category 2
 - Regional Land Use Category
 - Urban Footprint
 - Rural Living Area
 - Regional Landscape and Rural Production Area
 - Cadastral boundary

Category 1 SEQ development area is defined by the Planning Regulation, by reference to a gazette notice. Coordinates are provided for the boundary of the category 1 SEQ development area on lots intersected by the boundary. Category 2 SEQ development area is defined by the Planning Regulation, by reference to a gazette notice. Note that cadastral data is a representation, refer to spatial dataset available for download on Queensland Spatial for full extent of boundaries. *For the planning intent of these areas refer to the ShapingSEQ 2023 - South East Queensland Regional Plan

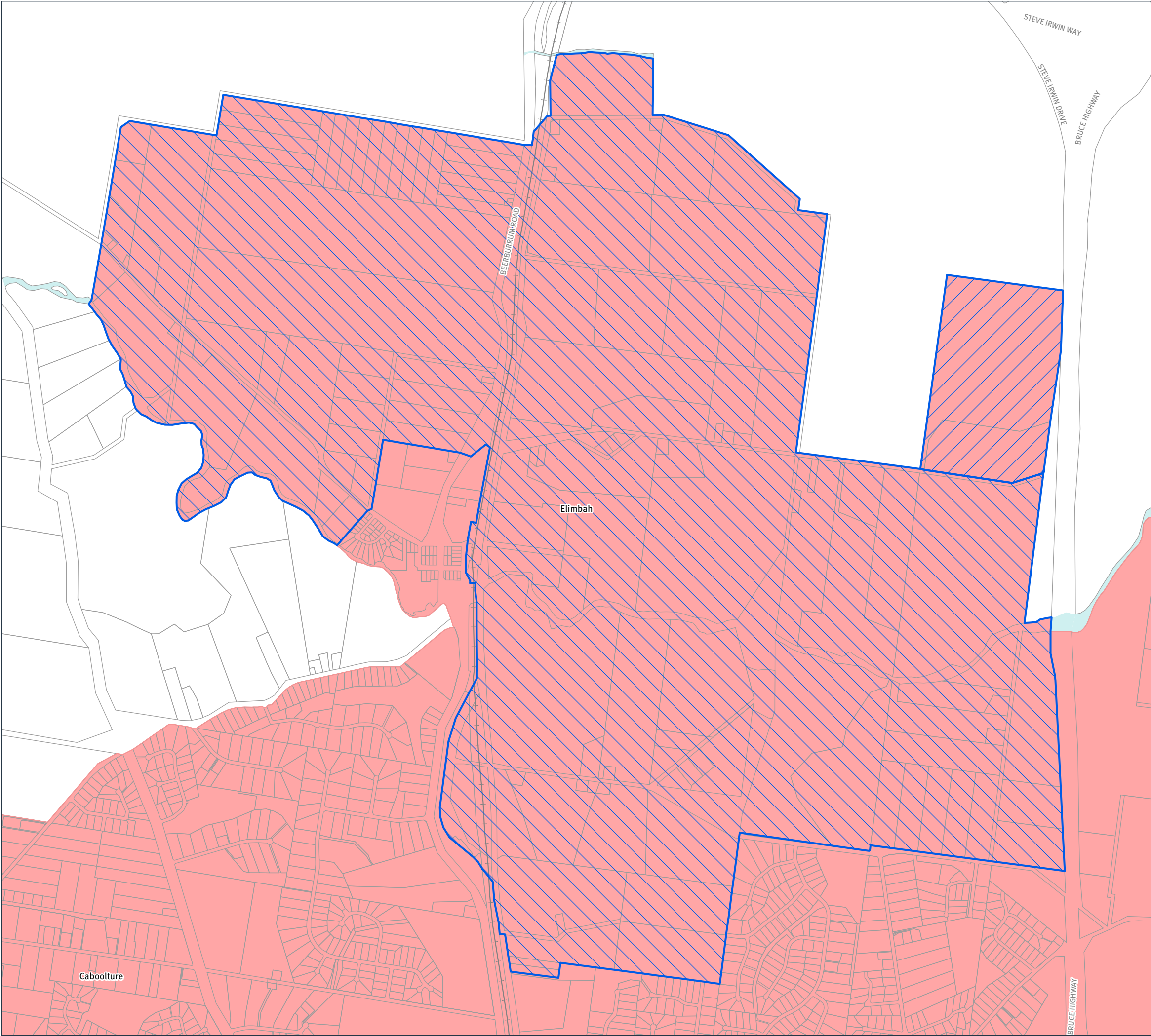


Information contained within the mapping is derived from the Digital Cadastral Database (DCDB), November 2023.

While every care is taken to ensure the accuracy of this product the Department of State Development, Infrastructure and Planning and the Department of Natural Resources and Mines, Manufacturing and Regional and Rural Development make no representations or warranties about the accuracy, reliability, completeness or suitability for any particular purpose and disclaims all responsibility and all liability (including without limitation, liability in negligence) for all expenses, losses, damages (including indirect or consequential damage) and costs you may incur as a result of the product being inaccurate or incomplete in any way or for any reason. © The State of Queensland 2025



Queensland Government
Department of State Development, Infrastructure and Planning



ShapingSEQ 2023
South East Queensland Regional Plan - Regulatory Provisions

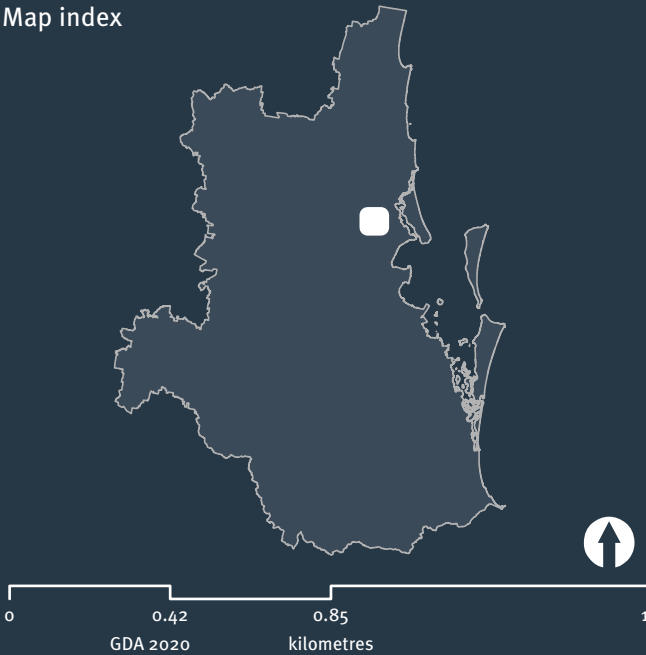
SEQ Development Area
Elimbah SEQ Development Area
Map SEQ RP 2. 3
April 2025

- Legend**
- SEQ Development Area
- Category 1
 - Category 2
- Regional Land Use Category
- Urban Footprint
 - Rural Living Area
 - Regional Landscape and Rural Production Area
 - Cadastral boundary

Category 1 SEQ development area is defined by the Planning Regulation, by reference to a gazette notice. Coordinates are provided for the boundary of the category 1 SEQ development area on lots intersected by the boundary. Category 2 SEQ development area is defined by the Planning Regulation, by reference to a gazette notice.

Note that cadastral data is a representation, refer to spatial dataset available for download on Queensland Spatial for full extent of boundaries.

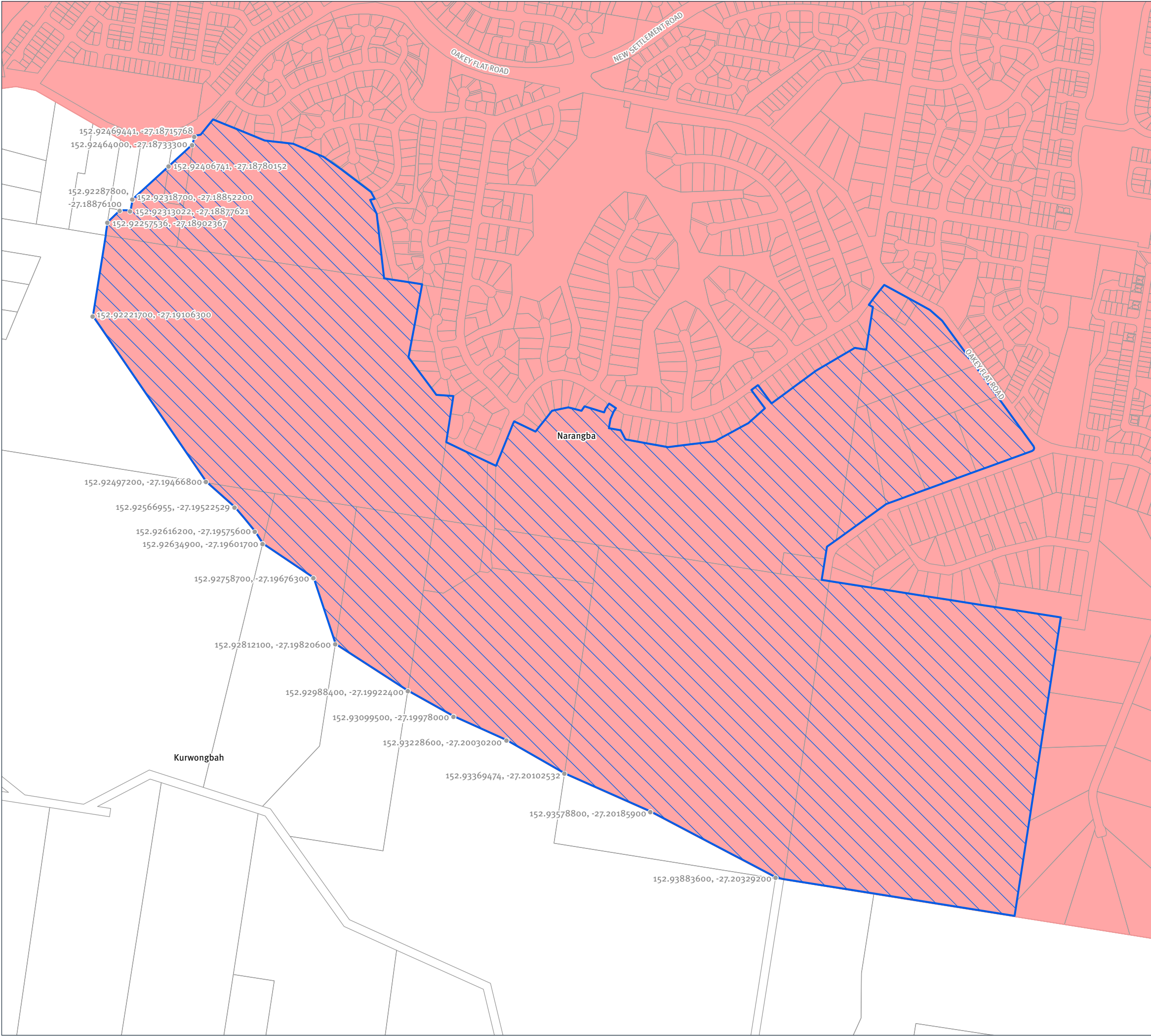
*For the planning intent of these areas refer to the ShapingSEQ 2023 - South East Queensland Regional Plan



Information contained within the mapping is derived from the Digital Cadastral Database (DCDB), November 2023.

While every care is taken to ensure the accuracy of this product the Department of State Development, Infrastructure and Planning and the Department of Natural Resources and Mines, Manufacturing and Regional and Rural Development make no representations or warranties about the accuracy, reliability, completeness or suitability for any particular purpose and disclaims all responsibility and all liability (including without limitation, liability in negligence) for all expenses, losses, damages (including indirect or consequential damage) and costs you may incur as a result of the product being inaccurate or incomplete in any way or for any reason. © The State of Queensland 2025





ShapingSEQ 2023
South East Queensland Regional Plan - Regulatory Provisions

SEQ Development Area

Narangba SEQ Development Area

April 2025

Map SEQ RP 2. 4

Legend

SEQ Development Area

Category 1

Category 2

Regional Land Use Category

Urban Footprint

Rural Living Area

Regional Landscape and Rural Production Area

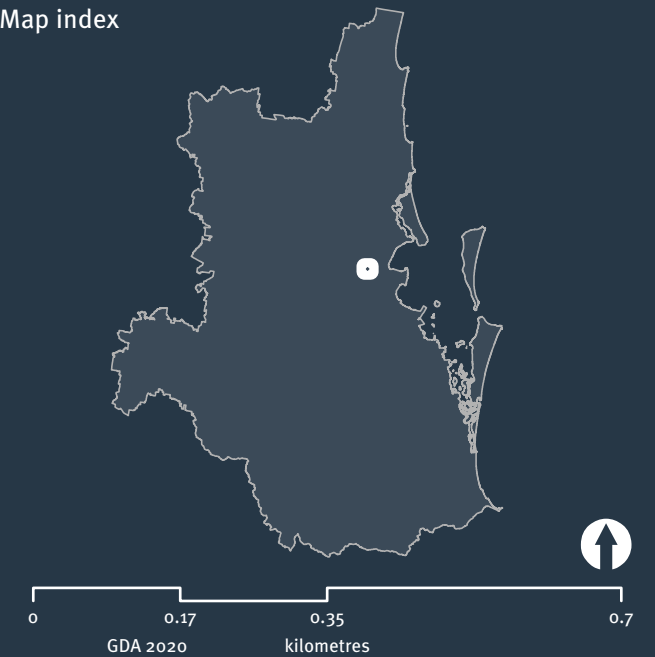
Cadastral boundary

Category 1 SEQ development area is defined by the Planning Regulation, by reference to a gazette notice. Coordinates are provided for the boundary of the category 1 SEQ development area on lots intersected by the boundary. Category 2 SEQ development area is defined by the Planning Regulation, by reference to a gazette notice.

Note that cadastral data is a representation, refer to spatial dataset available for download on Queensland Spatial for full extent of boundaries.

*For the planning intent of these areas refer to the ShapingSEQ 2023 - South East Queensland Regional Plan

Map index

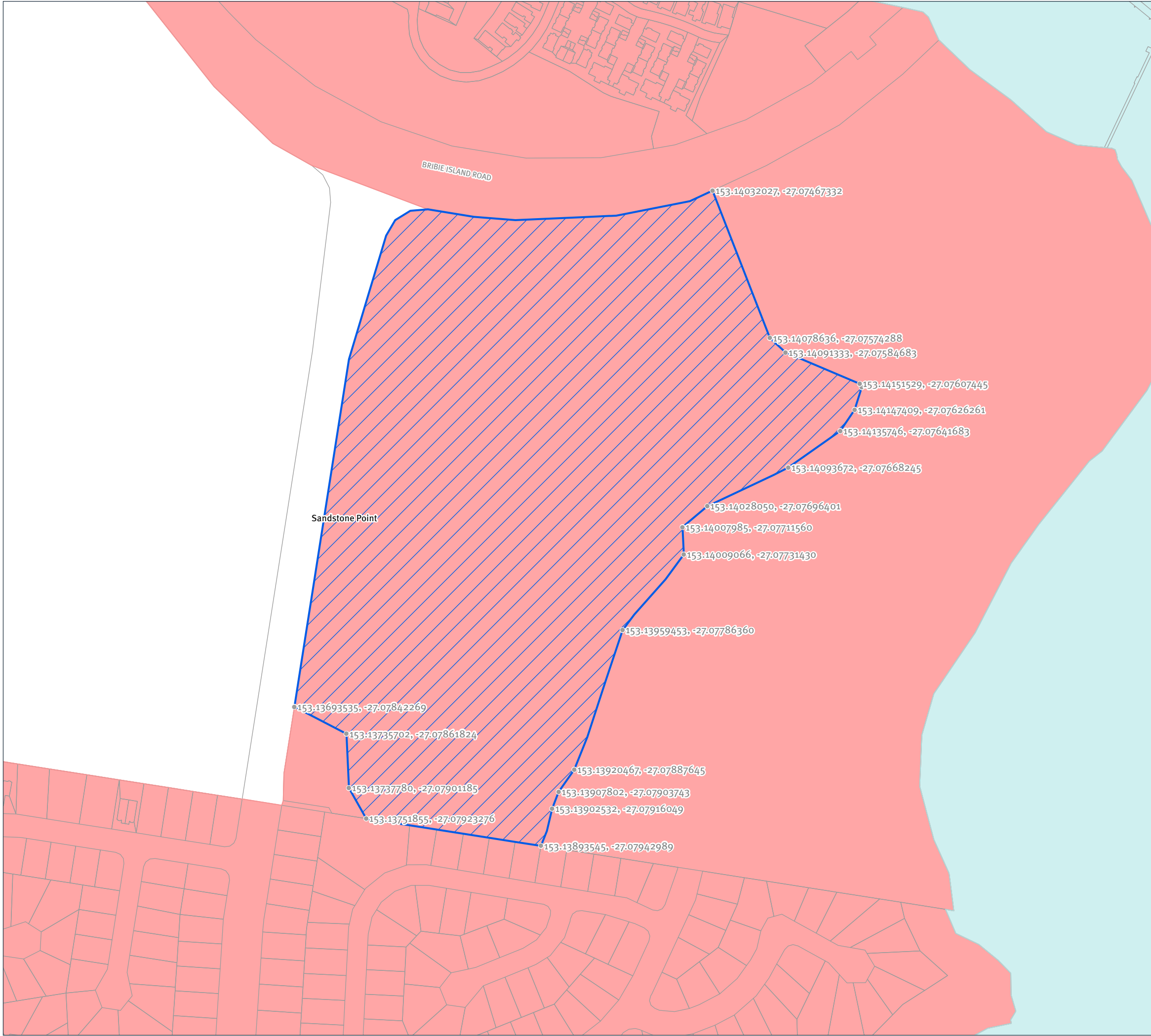


Information contained within the mapping is derived from the Digital Cadastral Database (DCDB), November 2023.

While every care is taken to ensure the accuracy of this product the Department of State Development, Infrastructure and Planning and the Department of Natural Resources and Mines, Manufacturing and Regional and Rural Development make no representations or warranties about the accuracy, reliability, completeness or suitability for any particular purpose and disclaims all responsibility and all liability (including without limitation, liability in negligence) for all expenses, losses, damages (including indirect or consequential damage) and costs you may incur as a result of the product being inaccurate or incomplete in any way or for any reason. © The State of Queensland 2025



Queensland Government
Department of State Development, Infrastructure and Planning



ShapingSEQ 2023
South East Queensland Regional Plan - Regulatory Provisions

SEQ Development Area
Sandstone Point SEQ Development Area
Map SEQ RP 2. 5
Legend
April 2025

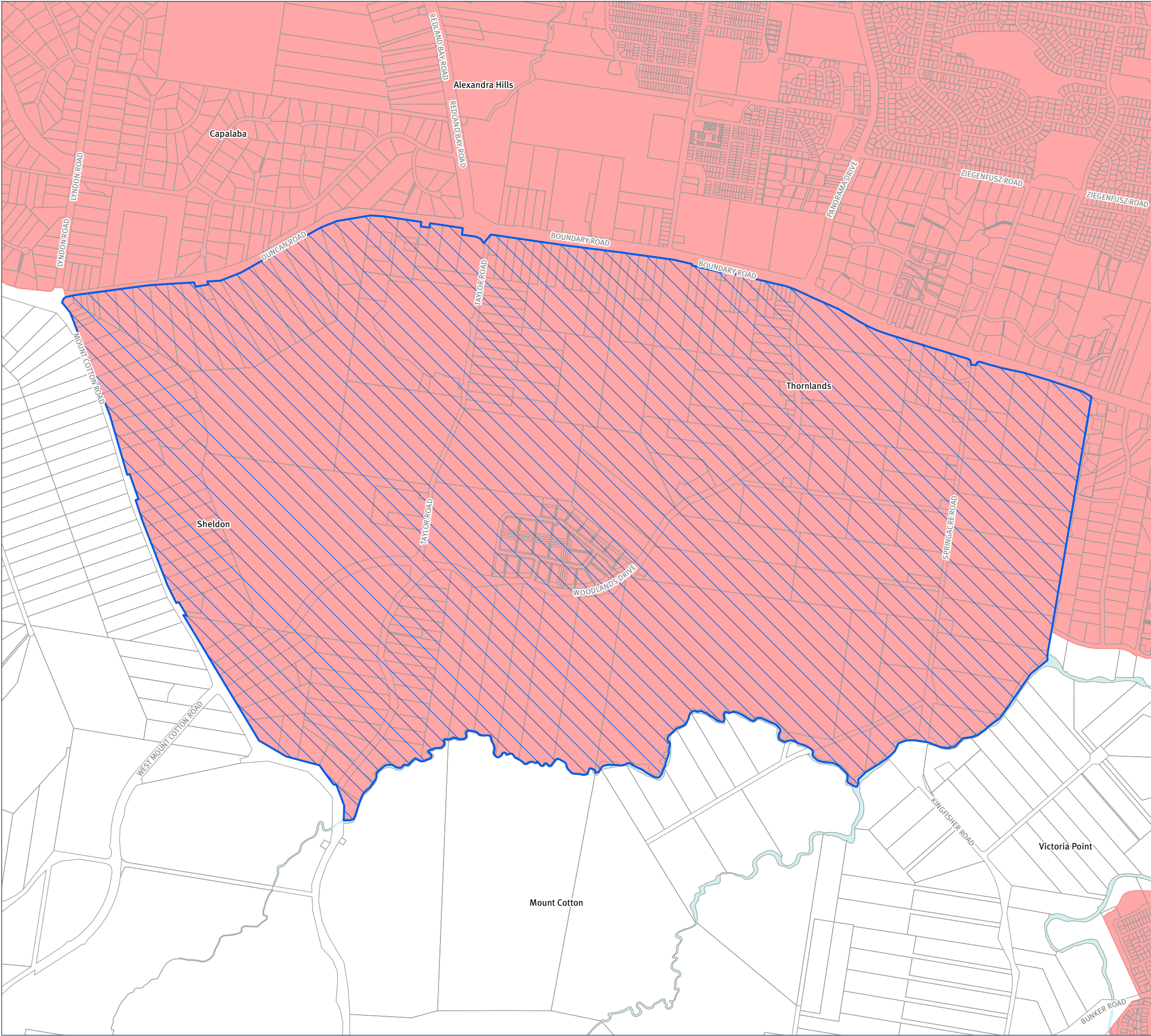
- SEQ Development Area
- Category 1
 - Category 2
- Regional Land Use Category
- Urban Footprint
 - Rural Living Area
 - Regional Landscape and Rural Production Area
 - Cadastral boundary

Category 1 SEQ development area is defined by the Planning Regulation, by reference to a gazette notice. Coordinates are provided for the boundary of the category 1 SEQ development area on lots intersected by the boundary. Category 2 SEQ development area is defined by the Planning Regulation, by reference to a gazette notice. Note that cadastral data is a representation, refer to spatial dataset available for download on Queensland Spatial for full extent of boundaries. *For the planning intent of these areas refer to the ShapingSEQ 2023 - South East Queensland Regional Plan



While every care is taken to ensure the accuracy of this product the Department of State Development, Infrastructure and Planning and the Department of Natural Resources and Mines, Manufacturing and Regional and Rural Development make no representations or warranties about the accuracy, reliability, completeness or suitability for any particular purpose and disclaims all responsibility and all liability (including without limitation, liability in negligence) for all expenses, losses, damages (including indirect or consequential damage) and costs you may incur as a result of the product being inaccurate or incomplete in any way or for any reason. © The State of Queensland 2025





ShapingSEQ 2023
South East Queensland Regional Plan - Regulatory Provisions

SEQ Development Area
Southern Thornlands SEQ Development Area April 2025
Map SEQ RP 2. 6

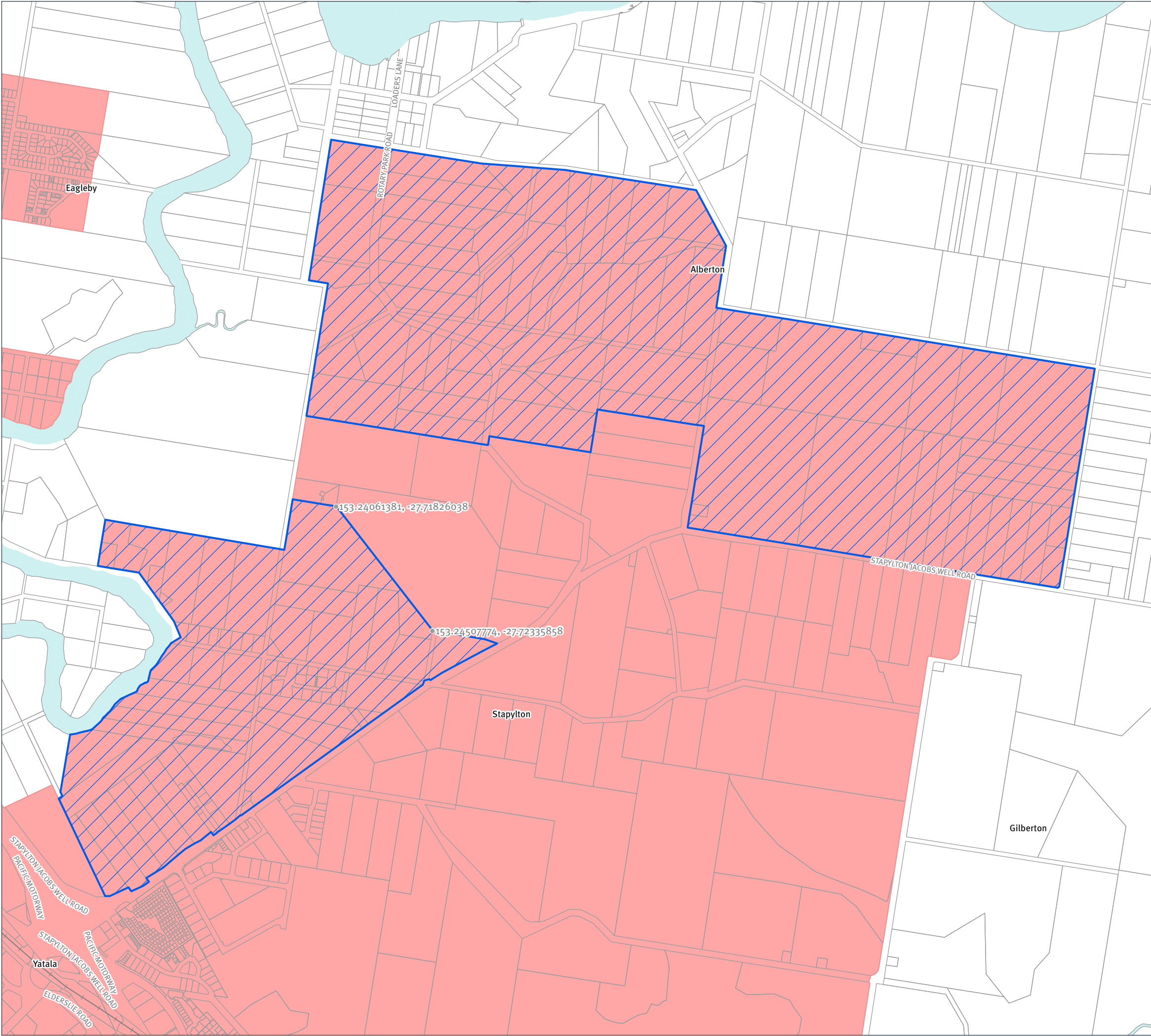
- Legend**
- SEQ Development Area
- Category 1
 - Category 2
- Regional Land Use Category
- Urban Footprint
 - Rural Living Area
 - Regional Landscape and Rural Production Area
 - Cadastral boundary

Category 1 SEQ development area is defined by the Planning Regulation, by reference to a gazette notice. Coordinates are provided for the boundary of the category 1 SEQ development area on lots intersected by the boundary. Category 2 SEQ development area is defined by the Planning Regulation, by reference to a gazette notice. Note that cadastral data is a representation, refer to spatial dataset available for download on Queensland Spatial for full extent of boundaries. *For the planning intent of these areas refer to the ShapingSEQ 2023 - South East Queensland Regional Plan



While every care is taken to ensure the accuracy of this product the Department of State Development, Infrastructure and Planning and the Department of Natural Resources and Mines, Manufacturing and Regional and Rural Development make no representations or warranties about the accuracy, reliability, completeness or suitability for any particular purpose and disclaims all responsibility and all liability (including without limitation, liability in negligence) for all expenses, losses, damages (including indirect or consequential damage) and costs you may incur as a result of the product being inaccurate or incomplete in any way or for any reason. © The State of Queensland 2025





ShapingSEQ 2023
South East Queensland Regional Plan - Regulatory Provisions

SEQ Development Area

Stapylton SEQ Development Area

April 2025

Map SEQ RP 2. 7

Legend

SEQ Development Area

Category 1

Category 2

Regional Land Use Category

Urban Footprint

Rural Living Area

Regional Landscape and Rural Production Area

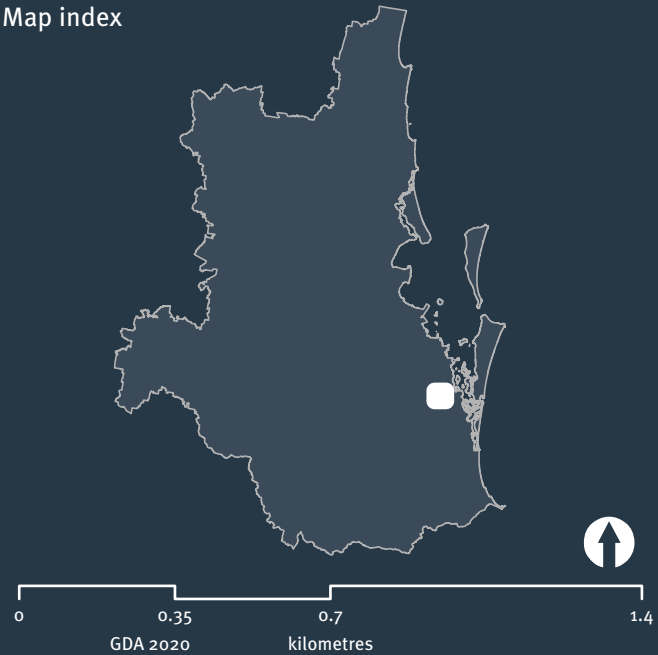
Cadastral boundary

Category 1 SEQ development area is defined by the Planning Regulation, by reference to a gazette notice. Coordinates are provided for the boundary of the category 1 SEQ development area on lots intersected by the boundary. Category 2 SEQ development area is defined by the Planning Regulation, by reference to a gazette notice.

Note that cadastral data is a representation, refer to spatial dataset available for download on Queensland Spatial for full extent of boundaries.

*For the planning intent of these areas refer to the ShapingSEQ 2023 - South East Queensland Regional Plan

Map index



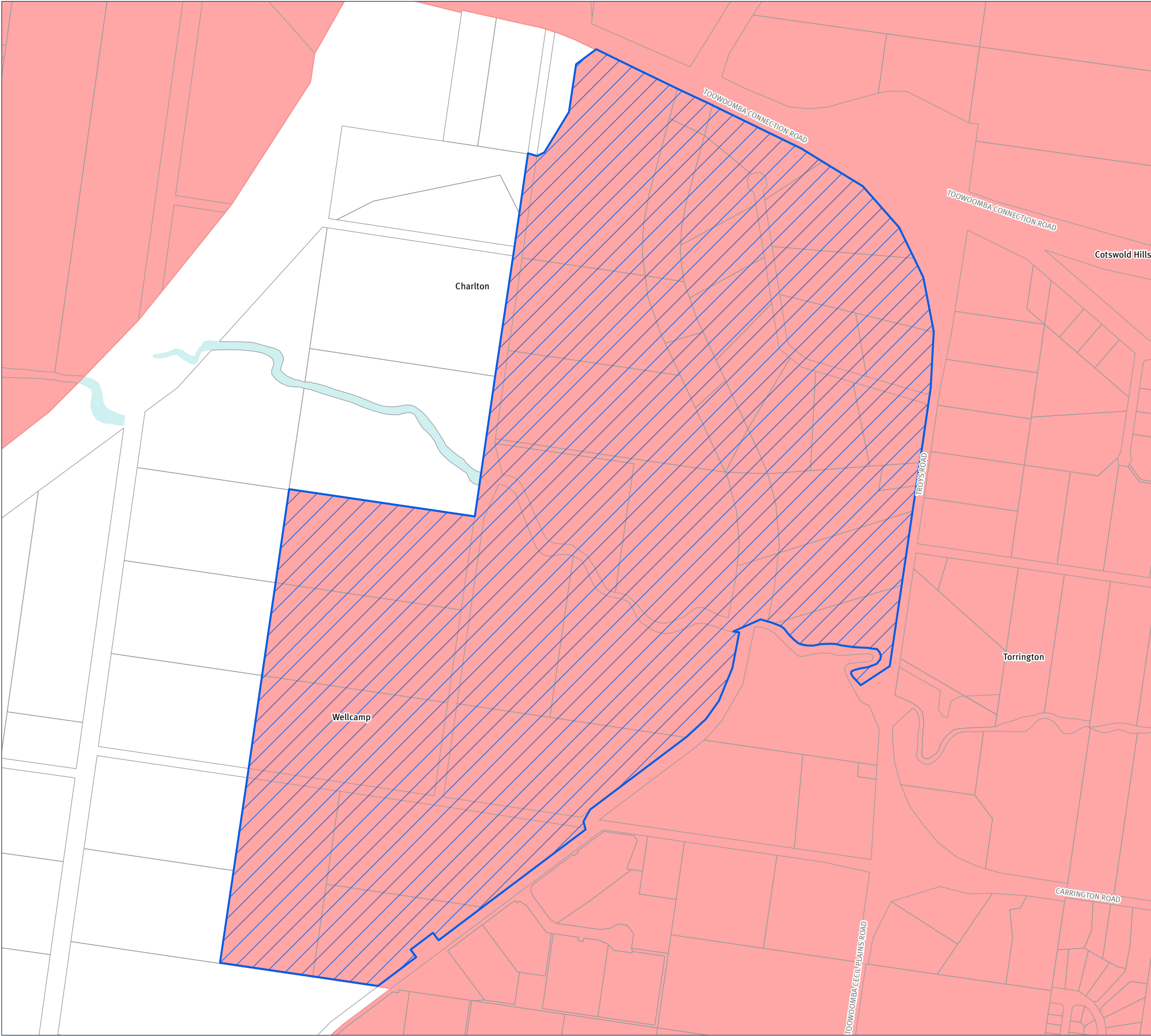
Information contained within the mapping is derived from the Digital Cadastral Database (DCDB), November 2023.

While every care is taken to ensure the accuracy of this product the Department of State Development, Infrastructure and Planning and the Department of Natural Resources and Mines, Manufacturing and Regional and Rural Development make no representations or warranties about the accuracy, reliability, completeness or suitability for any particular purpose and disclaims all responsibility and all liability (including without limitation, liability in negligence) for all expenses, losses, damages (including indirect or consequential damage) and costs you may incur as a result of the product being inaccurate or incomplete in any way or for any reason. © The State of Queensland 2025



Queensland Government

Department of State Development, Infrastructure and Planning



ShapingSEQ 2023
South East Queensland Regional Plan - Regulatory Provisions

SEQ Development Area
West Toowoomba SEQ Development Area April 2025
Map SEQ RP 2. 8

Legend

- SEQ Development Area
- Category 1
 - Category 2
- Regional Land Use Category
- Urban Footprint
 - Rural Living Area
 - Regional Landscape and Rural Production Area
 - Cadastral boundary

Category 1 SEQ development area is defined by the Planning Regulation, by reference to a gazette notice. Coordinates are provided for the boundary of the category 1 SEQ development area on lots intersected by the boundary. Category 2 SEQ development area is defined by the Planning Regulation, by reference to a gazette notice. Note that cadastral data is a representation, refer to spatial dataset available for download on Queensland Spatial for full extent of boundaries. *For the planning intent of these areas refer to the ShapingSEQ 2023 - South East Queensland Regional Plan

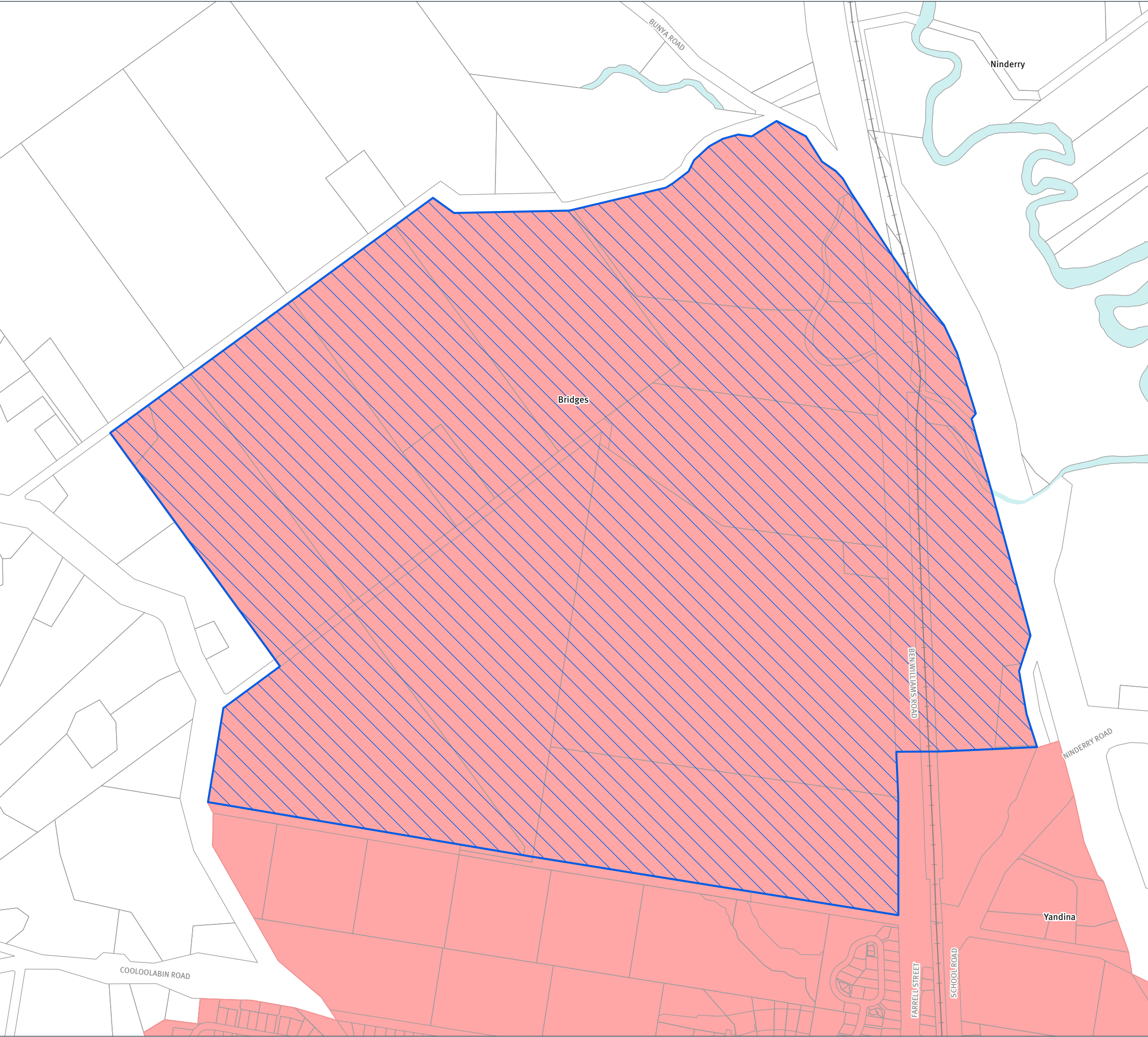
Map index



Information contained within the mapping is derived from the Digital Cadastral Database (DCDB), November 2023.

While every care is taken to ensure the accuracy of this product the Department of State Development, Infrastructure and Planning and the Department of Natural Resources and Mines, Manufacturing and Regional and Rural Development make no representations or warranties about the accuracy, reliability, completeness or suitability for any particular purpose and disclaims all responsibility and all liability (including without limitation, liability in negligence) for all expenses, losses, damages (including indirect or consequential damage) and costs you may incur as a result of the product being inaccurate or incomplete in any way or for any reason. © The State of Queensland 2025





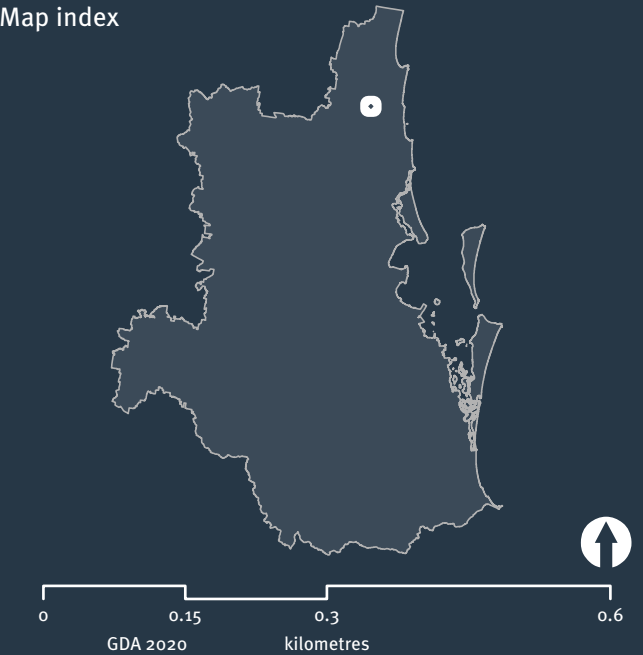
ShapingSEQ 2023

South East Queensland Regional Plan - Regulatory Provisions

SEQ Development Area
Yandina SEQ Development Area
Map SEQ RP 2. 9
April 2025

- Legend**
- SEQ Development Area
 - Category 1
 - Category 2
 - Regional Land Use Category
 - Urban Footprint
 - Rural Living Area
 - Regional Landscape and Rural Production Area
 - Cadastral boundary

Category 1 SEQ development area is defined by the Planning Regulation, by reference to a gazette notice. Coordinates are provided for the boundary of the category 1 SEQ development area on lots intersected by the boundary. Category 2 SEQ development area is defined by the Planning Regulation, by reference to a gazette notice. Note that cadastral data is a representation, refer to spatial dataset available for download on Queensland Spatial for full extent of boundaries. *For the planning intent of these areas refer to the ShapingSEQ 2023 - South East Queensland Regional Plan



Information contained within the mapping is derived from the Digital Cadastral Database (DCDB), November 2023.

While every care is taken to ensure the accuracy of this product the Department of State Development, Infrastructure and Planning and the Department of Natural Resources and Mines, Manufacturing and Regional and Rural Development make no representations or warranties about the accuracy, reliability, completeness or suitability for any particular purpose and disclaims all responsibility and all liability (including without limitation, liability in negligence) for all expenses, losses, damages (including indirect or consequential damage) and costs you may incur as a result of the product being inaccurate or incomplete in any way or for any reason. © The State of Queensland 2025



Queensland Government
Department of State Development, Infrastructure and Planning