

REGIONAL INTERESTS DEVELOPMENT APPROVAL (RIDA)

RPI25/002 Anglo American - Planet Downs Project (Exploration Drilling)

(Given under section 53 of the *Regional Planning Interests Act 2014*)

Date: 6 June 2025

Description of the land

Real property description: Lot 1 on GY14, Lot 2 on CP907594 and Lot 3 on SP194668

Area of regional interest: Gulf Rivers Strategic Environmental Area

Local Government Area: Burke Shire

Approved resource activities

The approved resource activities are set out in **Table 1** below.

A summary of the proposed resource activities in the Gulf Rivers Strategic Environmental Area (Gulf Rivers SEA) are provided in **Table 2** below.

This development approval authorises impacts on the Gulf Rivers SEA by the approved resource activities.

Table 1: Approved resource activities

Area of regional interest	Location	Resource activity	Area of disturbance (ha)
Gulf Rivers SEA	Lot 1 on GY14, Lot 2 on CP907594 and Lot 3 on SP194668	Exploration drill pad (10)	1.0
		Temporary access tracks	2.4
		Temporary camp	0.5
		Temporary laydown area	0.1
Total area of disturbance:			4.0ha

Table 2: Description summary of the proposed resource activities in the Gulf Rivers SEA

Resource activity	Description
Exploration drill pad	<ul style="list-style-type: none">A maximum of 10 padsEach pad measures approximately 30m x 30m, to a maximum size of 0.1haEach pad includes a drill hole, sumps and temporary core laydownTopsoils pushed from the construction of the drill pad as well as the material excavated from the construction of the sumps will be stockpiled on the drill pad
Temporary access tracks	<ul style="list-style-type: none">Up to 8km of tracks to connect existing station tracks to drilling sitesMaximum total width of 3.0m

Temporary camp	<ul style="list-style-type: none"> • Up to 0.5ha in size • Accommodates up to 10 staff in caravan-style • Located in previously cleared areas • Not located within 100m of mapped drainage lines
Temporary laydown area	<ul style="list-style-type: none"> • Up to 0.1ha in size • Co-located with temporary accommodation camp

Regional interests conditions

A person who is the holder of, or is acting under, this RIDA must not contravene any of the conditions related to this approval.

No.	Conditions	Condition timing
1.	Carry out the approved resource activities in the Gulf Rivers SEA generally in accordance with: <ul style="list-style-type: none"> (a) the resource activities identified in Table 1: Approved resource activities; (b) the resource activities as described in Table 2: Description summary of the proposed resource activities in the Gulf Rivers SEA; and (c) Plate 3.1 Proposed Drilling Areas and Camp Locations in relation to Mapped Waterways and SEA Designated Precinct (Attachment 1) as provided in the submitted RPI Act Development Application Supporting Information Report, Version 02, prepared by Umwelt (Australia) Pty Ltd, dated 13 February 2025. 	At all times
2.	All access tracks should be co-located and reduced in width as much as practically possible.	At all times
3.	The resource activities must only be undertaken in the dry season.	As indicated
4.	The resource activities are not permitted in the designated precinct within the SEA.	At all times
5.	Disturbance from the resource activities must not occur within 100 metres of the banks of a watercourse.	At all times
6.	No trees with a diameter at breast height (DBH) of greater than 20 centimetres (cm) are to be cleared.	At all times
7.	Disturbance from the resource activities must not occur in a wildlife corridor. <i>Disturbance: means any impact to the landscape, vegetation, air quality, hydrology, habitat, or water quality that has been directly or indirectly caused by human activity associated with the resource activity.</i>	At all times

No.	Conditions	Condition timing
8.	<p>Contaminants from the resource activities must not be directly or indirectly released to a watercourse, wetland, drainage feature or to the banks of a watercourse, wetland, drainage feature or to groundwater.</p> <p>Contaminants: means water contaminants as defined in Schedule 10 of the Environmental Protection Regulation 2019.</p>	At all times
9.	Stormwater from the resource activities must be managed in a manner that prevents release of contaminants to the receiving environment.	At all times
10.	Creek crossings should be used only when there is no water present or when there is no flow.	At all times
11.	Acid sulphate soils that are exposed or disturbed must be treated and managed in accordance with the latest edition of the Queensland Acid Sulphate Soils Technical Manual.	At all times
12.	Works to maintain tracks and roads across watercourses must avoid causing impacts due to erosion, sedimentation, diversion, or otherwise degradation of beds and banks, and associated vegetation.	At all times
13.	Camps and drill sites are to be setback at least 100m from areas of environmental and cultural significance including watercourses and wetlands.	At all times
14.	<p>(a) All complaints received, and resulting actions taken, about the impact of the approved resource activities on the environmental attributes in the Gulf Rivers Strategic Environmental Area must be recorded. The record must include:</p> <ul style="list-style-type: none"> (i) name, address and contact number of the complainant (ii) time and date of complaint (iii) reasons for the complaint (iv) investigations undertaken (v) conclusions formed (vi) actions taken to resolve the complaint (vii) any abatement measures implemented (viii) person responsible for resolving the complaint. <p>(b) Provide records of any complaints received and recorded in accordance with this condition to the chief executive at RPIAct@dsdilgp.qld.gov.au</p> <p><i>Note: The record of complaint provided to the chief executive must state the application reference number, being RPI25/002.</i></p>	<p>(a) At all times</p> <p>(b) At all times</p>
15.	A full copy of the regional interests development approval must be kept on-site and available to any person(s) contracted to undertake the approved resource activities.	At all times

General Advice

It is the applicant's responsibility to ensure all relevant approvals and licenses are obtained from the applicable Local, State, and/or Federal Authorities prior to works commencing on site.

Attachment 1 – Approved Plan

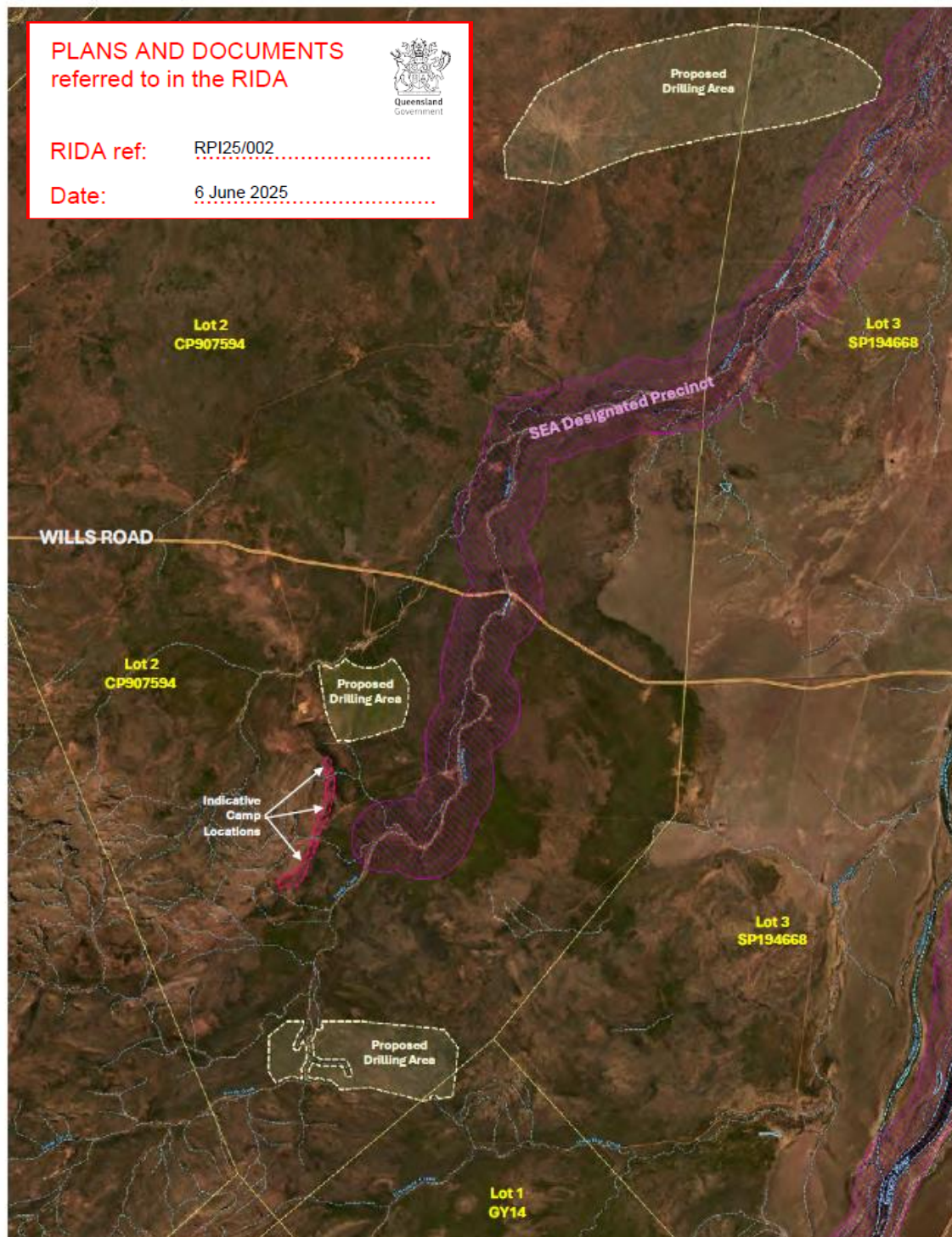


Plate 3.1 Proposed Drilling Areas and Camp Locations in relation to Mapped Waterways and SEA Designated Precinct