

# REGIONAL INTERESTS DEVELOPMENT APPROVAL (RIDA)

## RPI24/003 Tackle Resources Pty Limited – Westmoreland Project

(Given under section 53 of the *Regional Planning Interests Act 2014*)

Date: 6 June 2025

### Description of the land

Real property description: Lot 1 CP887914 and Lot 1 SP217472

Area of regional interest: Gulf Rivers Strategic Environmental Area (SEA)

Local Government Area: Burke Shire

### Approved resource activities

The approved resource activities are set out in **Table 1** below.

A summary of the proposed resource activities in the Gulf Rivers Strategic Environmental Area (Gulf Rivers SEA) are provided in **Table 2** below.

This development approval authorises impacts on the Gulf Rivers SEA by the approved resource activities.

**Table 1:** Approved resource activities

Area of regional interest	Location	Resource activity	Area of disturbance (hectares)
Gulf Rivers Strategic Environmental Area	Lot 1 on CP887914 Lot 1 on SP217472	Drill pads	2.24
		Temporary accommodation camp	1.0
		Access tracks	0.43
Total disturbance area			3.67ha

**Table 2:** Description summary of the proposed resource activities in the Gulf Rivers SEA

Resource activity	Definition
Drill pads	A total of up to 56 drill pads, each with an approximate area of 20m x 20m
Temporary accommodation camp	Temporary accommodation camp with a maximum area of 1.0ha
Access tracks	Up to 1.23km of new temporary access track, with a maximum width of 3.5 metres and the use of existing station access tracks where possible.

## Regional interests conditions

A person who is the holder of, or is acting under, this RIDA must not contravene any of the conditions related to this approval.

No.	Conditions	Condition timing
1.	Carry out the approved resource activities in the Gulf Rivers Strategic Environmental Area generally in accordance with: (a) the resource activities identified in Table 1: Approved resource activities (b) the resource activities as described in Table 2: Description summary of the proposed resource activities in the Gulf Rivers SEA (c) plan titled Locations for Planned Exploration within MDL 2026, contained in Appendix 1 of Tackle Resources Pty Limited – Assessment Application Report – Westmoreland Project – MDL2026, dated 3 June 2024 ( <b>Attachment 1</b> ).	At all times
2.	Drill pads and access tracks within riparian areas are limited to areas shown in Figure 6 - Regulated Vegetation Intersecting a Watercourse, dated 31 March 2025, of the Ecological Assessment Report prepared by Terra Solutions dated 31 March 2024 ( <b>Attachment 2</b> ).	At all times
3.	The resource activity must not occur in or have a direct or indirect impact on a wetland of high ecological value, Great Artesian Basin Spring, subterranean cave, Groundwater Dependent Ecosystem (GDE) or wetland.	At all times
4.	Contaminants from the resource activities must not be directly or indirectly released to a watercourse, wetland, drainage feature or to the banks of a watercourse, wetland, drainage feature or to groundwater.	At all times
5.	Access tracks must be minimised in width and co-located where practical.	At all times
6.	Access tracks across riparian zones must not be constructed within 200 metres of an existing access track.	At all times
7.	The construction or maintenance of access tracks in a watercourse must be conducted where there is no water present or in times of no flow.	At all times
8.	The construction or maintenance of access tracks in a watercourse must not result in the clearing of riparian vegetation outside of the minimum area practicable to carry out the works.	At all times

No.	Conditions	Condition timing
9.	Works to create access tracks across watercourses must limit erosion, sedimentation, diversion, or otherwise degradation of creek or riverbanks and associated vegetation.	At all times
10.	After the construction or maintenance works for access tracks in a watercourse are completed, the access tracks must not: (a) result in ongoing negative impacts to water quality; or (b) result in bank instability	At all times
11.	Disturbance within wildlife corridors that is no longer required for the resource activities must be rehabilitated within six months of no longer being required.  <i>Note: <b>Disturbance</b> means any impact to the landscape, vegetation, air quality, hydrology, habitat, or water quality that has been directly or indirectly caused by human activity associated with the resource/ regulated activity.</i>	As indicated
12.	Temporary waterway barrier works must not inhibit wildlife corridors during periods of fish migration.	At all times
13.	No trees with a diameter at breast height (dbh) greater than 20cm are to be cleared during the undertaking of the resource activities.	At all times
14.	Clearing for resource activities must be completed using the 'blade-up' method, whereby the surface is left intact and topsoil undisturbed.	At all times
15.	<p>(a) All complaints received, and resulting actions taken, about the impact of the approved resource activities on the environmental attributes in the Gulf Rivers Strategic Environmental Area must be recorded. The record must include:</p> <ul style="list-style-type: none"> <li>(i) name, address and contact number of the complainant;</li> <li>(ii) time and date of complaint;</li> <li>(iii) reasons for the complaint;</li> <li>(iv) investigations undertaken;</li> <li>(v) conclusions formed;</li> <li>(vi) actions taken to resolve the complaint;</li> <li>(vii) any abatement measures implemented; and</li> <li>(viii) person responsible for resolving the complaint.</li> </ul> <p>(b) Provide records of any complaints received and recorded in accordance with this condition to the chief executive at <a href="mailto:RPIAct@dsdilgp.qld.gov.au">RPIAct@dsdilgp.qld.gov.au</a>. The records must state the application's reference application reference number, being RPI24/003.</p>	<p>(a) At all times</p> <p>(b) Within 60 business days of receipt of a complaint</p>
16.	A full copy of the regional interest development approval must be kept on-site and available to any person(s) contracted to undertake	At all times

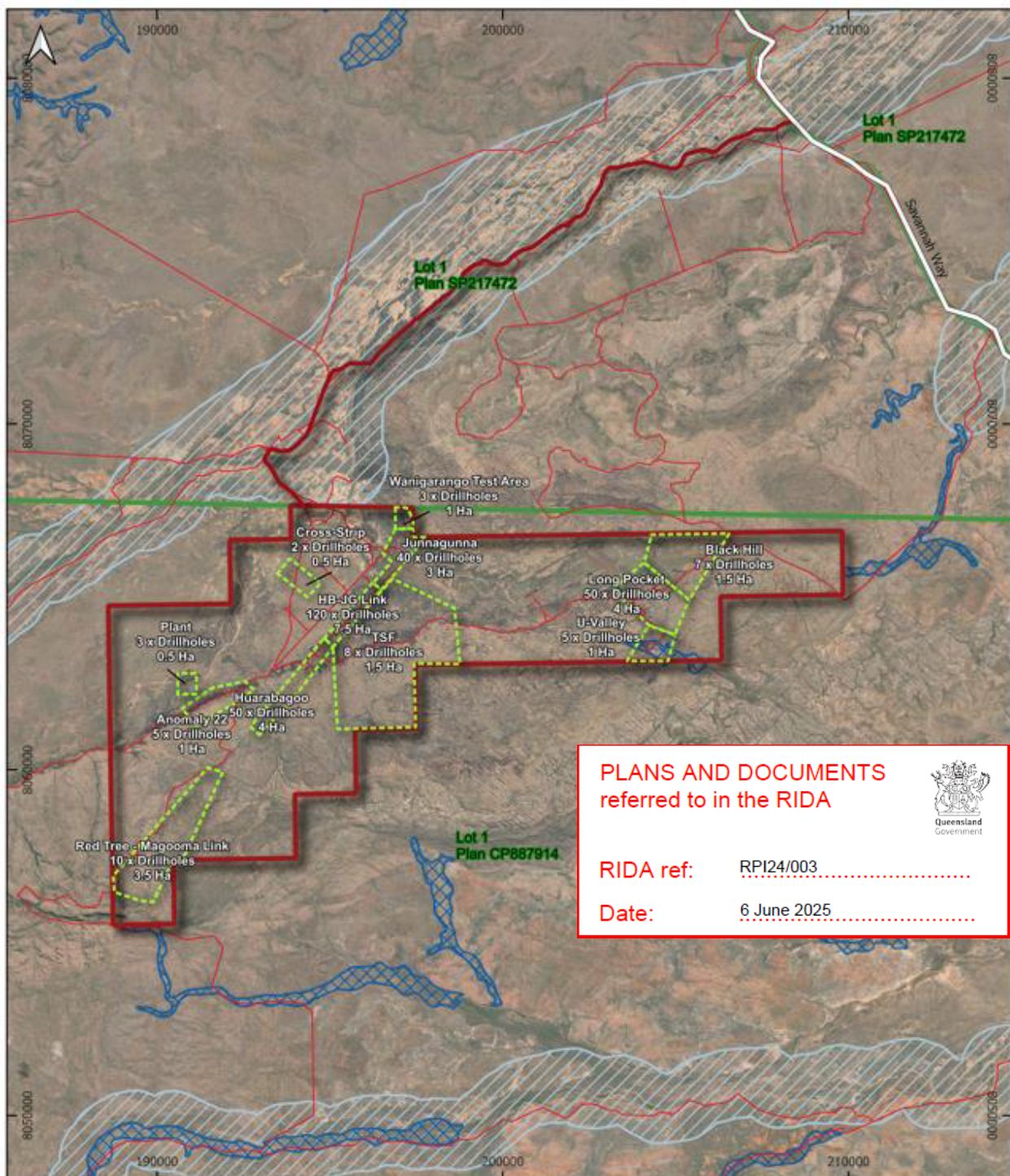
No.	Conditions	Condition timing
	the approved resource activities.	

### **General Advice**

---

It is the applicant's responsibility to ensure all relevant approvals and licenses are obtained from the applicable Local, State, and/or Federal Authorities prior to works commencing on site.

## Attachment 1 – Approved Plan



### Legend

- RIDA - Proposed Exploration Areas
- MDL Access Application
- MDL Permit Application
- Savannah highway
- Existing Access Tracks
- Endangered Regional Ecosystem
- Strategic Environmental Area-Designated Precinct
- Cadastral Property

### Locations for Planned Exploration within MDL 2026

0 2 4 6 km

Scale: 1:150,000 MGA94 Zone 54



## Attachment 2 – Approved Plan

