

Our ref: WR26/3509
Your ref: Project ID P-K77-04

19 February 2026

Sunshine Coast Regional Council
Locked Bag 72
Sunshine Coast Mail Centre QLD 4560
tina.freeman@sunshinecoast.qld.gov.au

Attention: Tina Freeman

Dear Ms Freeman

Agreement to an exemption certificate

The State Assessment and Referral Agency (SARA) received your request for an exemption certificate to be given for the development described below on 6 February 2026.

Under section 46(2)(b) of the *Planning Act 2016*, SARA advises that an exemption certificate is given for the development described below.

Applicant details

Applicant name:	Sunshine Coast Regional Council
Applicant contact details:	Ms Tina Freeman Locked Bag 72 Sunshine Coast Mail Centre QLD 4560 tina.freeman@sunshinecoast.qld.gov.au

Premises details

Real property description:	Esplanade adjacent to Lot 11 on SP289640
Street address:	Power Memorial Park, Beach Access 124, Mudjimba
Local government area:	Sunshine Coast Council

Development details

Description:	Operational work that is tidal works or work in a coastal management district – interfering with quarry material on state coastal land above high water mark for the construction of a shelter structure over part of an existing viewing deck
--------------	--

As described above and in accordance with the following documentation:

Documents title	Prepared by	Reference/Revision	Date
Mudjimba Beach Access 124 Shelter Structure – Cover Sheet	Sunshine Coast Regional Council	L001 Revision B	04/08/2025
Mudjimba Beach Access 124 Shelter Structure – Landscape Plan	Sunshine Coast Regional Council	L201 Revision B	04/08/2025
Mudjimba Beach Access 124 Shelter Structure – Landscape Details	Sunshine Coast Regional Council	L901 Revision B	04/08/2025

Referral agencies

Not applicable.

Assessable development

This exemption certificate relates to the following provision of the Planning Regulation 2017:

- Schedule 10, Part 17, Division 2, Table 1, Item 1 – Operational work that is tidal works or work in a coastal management district.

Human rights consideration

A consideration of the 23 fundamental human rights protected under the *Human Rights Act 2019* has been undertaken as part of this decision. The decision was found not to limit human rights under the *Human Rights Act 2019* therefore, it is reasonable to conclude the decision is compatible with human rights.

Reasons for giving the exemption certificate

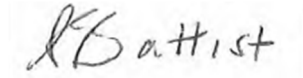
This exemption certificate is given as the effects of the development would be minor or inconsequential, considering the circumstances under which the development was categorised as assessable development.

When exemption certificate ceases to have effect

Pursuant to section 46(8) of the *Planning Act 2016*, this exemption certificate has effect for two years.

For further information please contact Celeste Bownds, Senior Planning Officer, SEQ North Region, Planning Services on (07) 5352 9708, or via email SEQNorthSARA@dsdip.qld.gov.au who will be pleased to assist.

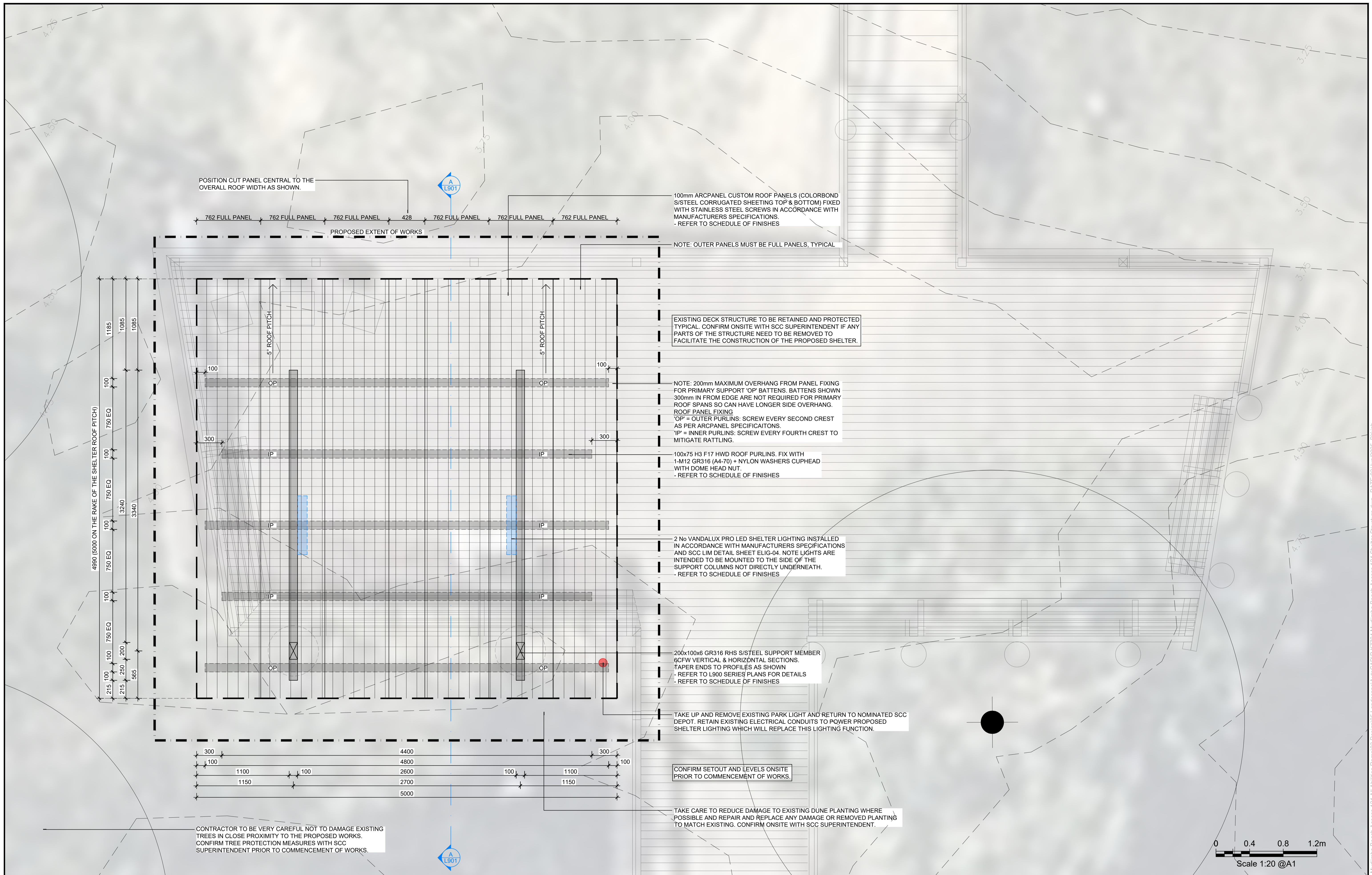
Yours sincerely

A handwritten signature in black ink that reads "S Battist". The signature is written in a cursive style with a large initial 'S'.

Sallie Battist
A/Director
Planning Services
Planning Group

enc Attachment 1 – Material referenced in exemption certificate

cc Sunshine Coast Regional Council, mail@sunshinecoast.qld.gov.au



POSITION CUT PANEL CENTRAL TO THE OVERALL ROOF WIDTH AS SHOWN.

100mm ARCPANEL CUSTOM ROOF PANELS (COLORBOND S/STEEL CORRUGATED SHEETING TOP & BOTTOM) FIXED WITH STAINLESS STEEL SCREWS IN ACCORDANCE WITH MANUFACTURERS SPECIFICATIONS.
- REFER TO SCHEDULE OF FINISHES

NOTE: OUTER PANELS MUST BE FULL PANELS, TYPICAL

EXISTING DECK STRUCTURE TO BE RETAINED AND PROTECTED TYPICAL. CONFIRM ONSITE WITH SCC SUPERINTENDENT IF ANY PARTS OF THE STRUCTURE NEED TO BE REMOVED TO FACILITATE THE CONSTRUCTION OF THE PROPOSED SHELTER.

NOTE: 200mm MAXIMUM OVERHANG FROM PANEL FIXING FOR PRIMARY SUPPORT 'OP' BATTENS. BATTENS SHOWN 300mm IN FROM EDGE ARE NOT REQUIRED FOR PRIMARY ROOF SPANS SO CAN HAVE LONGER SIDE OVERHANG.
ROOF PANEL FIXING
'OP' = OUTER PURLINS: SCREW EVERY SECOND CREST AS PER ARCPANEL SPECIFICATIONS.
'IP' = INNER PURLINS: SCREW EVERY FOURTH CREST TO MITIGATE RATTLING.

100x75 H3 F17 HWD ROOF PURLINS. FIX WITH 1-M12 GR316 (A4-70) + NYLON WASHERS CUPHEAD WITH DOME HEAD NUT.
- REFER TO SCHEDULE OF FINISHES

2 No VANDALUX PRO LED SHELTER LIGHTING INSTALLED IN ACCORDANCE WITH MANUFACTURERS SPECIFICATIONS AND SCC LIM DETAIL SHEET ELIG-04. NOTE LIGHTS ARE INTENDED TO BE MOUNTED TO THE SIDE OF THE SUPPORT COLUMNS NOT DIRECTLY UNDERNEATH.
- REFER TO SCHEDULE OF FINISHES

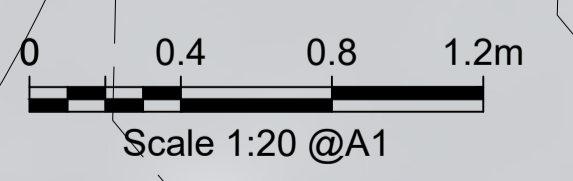
200x100x6 GR316 RHS S/STEEL SUPPORT MEMBER 6CFW VERTICAL & HORIZONTAL SECTIONS. TAPER ENDS TO PROFILES AS SHOWN
- REFER TO L900 SERIES PLANS FOR DETAILS
- REFER TO SCHEDULE OF FINISHES

TAKE UP AND REMOVE EXISTING PARK LIGHT AND RETURN TO NOMINATED SCC DEPOT. RETAIN EXISTING ELECTRICAL CONDUITS TO POWER PROPOSED SHELTER LIGHTING WHICH WILL REPLACE THIS LIGHTING FUNCTION.

CONFIRM SETOUT AND LEVELS ONSITE PRIOR TO COMMENCEMENT OF WORKS.

TAKE CARE TO REDUCE DAMAGE TO EXISTING DUNE PLANTING WHERE POSSIBLE AND REPAIR AND REPLACE ANY DAMAGE OR REMOVED PLANTING TO MATCH EXISTING. CONFIRM ONSITE WITH SCC SUPERINTENDENT.

CONTRACTOR TO BE VERY CAREFUL NOT TO DAMAGE EXISTING TREES IN CLOSE PROXIMITY TO THE PROPOSED WORKS. CONFIRM TREE PROTECTION MEASURES WITH SCC SUPERINTENDENT PRIOR TO COMMENCEMENT OF WORKS.



NOT FOR CONSTRUCTION

B	04/06/2025	APPROVAL ISSUE	JB	HG	CD	A1 - 1:20	
A	30/08/2024	PRELIMINARY ISSUE	JB			A3 - 1:40	
Rv.	DATE	REVISIONS	DRAWN	CHECK 1	CHECK 2	SCALE	

Sunshine Coast COUNCIL
Design & Placemaking Services | Landscape Architecture Services

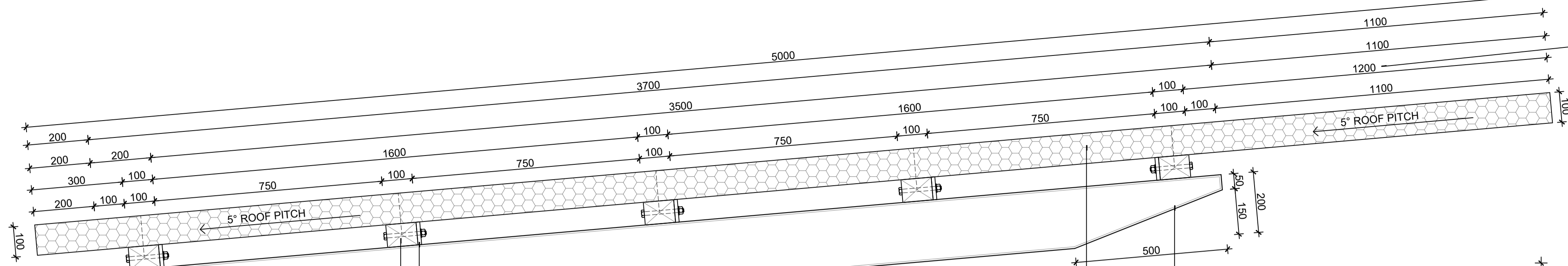
MUDJIMBA BEACH ACCESS 124 SHELTER STRUCTURE
LANDSCAPE DOCUMENTATION

LANDSCAPE PLAN

Project ID:
P-K7704

Sheet No. - Revision No.
L201 B

FILE:O:\Design\Aps\K7704 Mudgejumba Beach Access 124 All Abilities Ramp\03 Design\05 Landscape\AutoCAD\K7704 Mudgejumba Beach Access 124 Shelter Structure.dwg DATE:03/09/2025 BY:jrb



NOTE: FRONT OVERHANG IS CLOSE TO MAXIMUM ARCPANEL DESIGN STANDARDS. ENSURE 1300mm MAX FROM SCREWLINE, TYPICAL

100mm ARCPANEL CUSTOM ROOF PANELS (COLORBOND S/STEEL CORRUGATED SHEETING TOP & BOTTOM) FIXED WITH STAINLESS STEEL SCREWS IN ACCORDANCE WITH MANUFACTURERS SPECIFICATIONS. - REFER TO SCHEDULE OF FINISHES

PROFILE/TAPER RAFTER ENDS WITH 6mm THICK S/STEEL PLATE AS SHOWN. WELD/GRIND THE EDGES FOR FORM RADIUS TO MATCH EXISTING FACTORY FORMED RHS EDGE PROFILE.

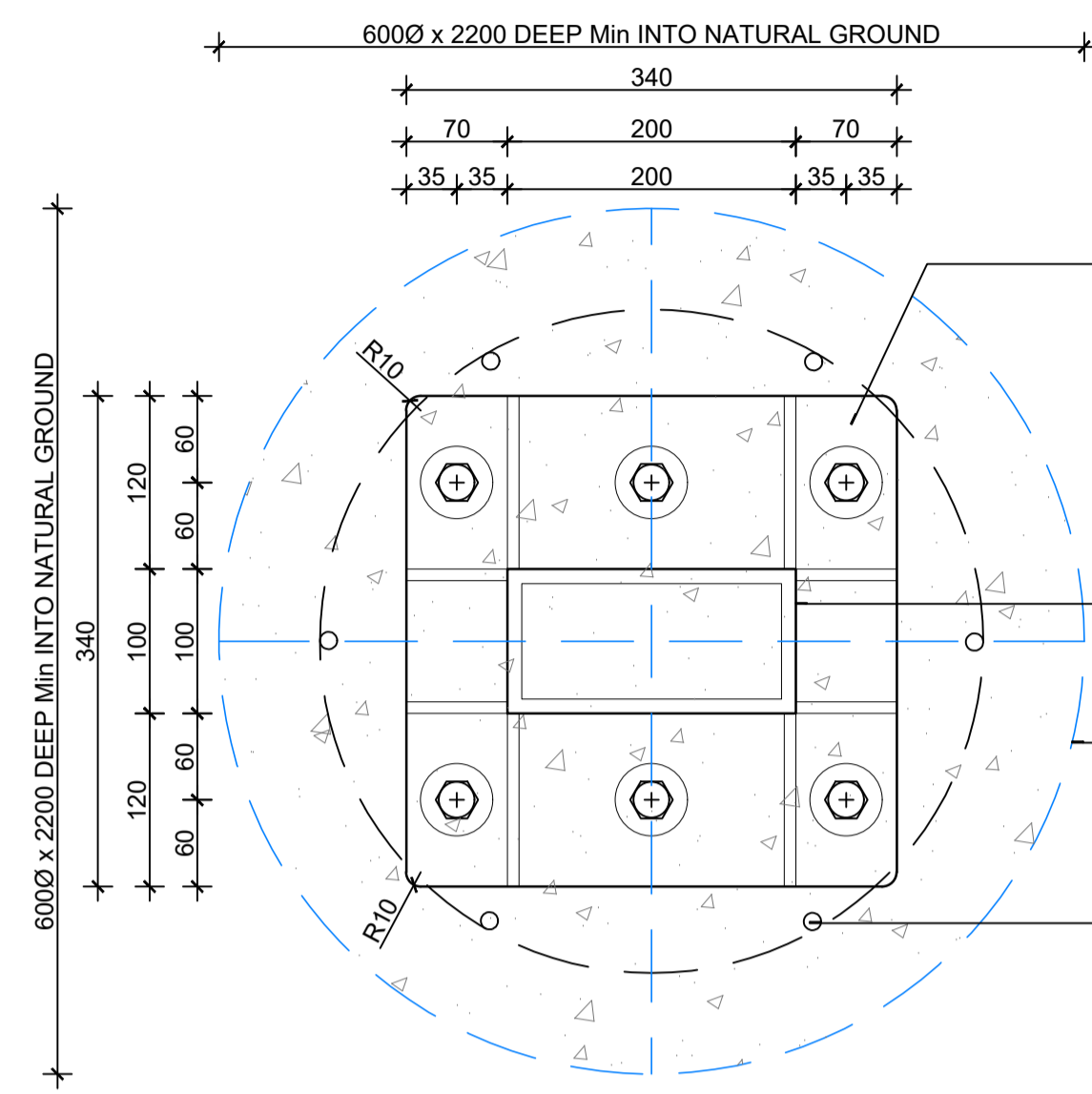
75x75x8 S/STEEL FIXING PLATES CFW TO SUPPORT MEMBER FOR PURLIN FIXING

100x75 H3 F17 HWD ROOF PURLINS. FIX WITH 1-M12 GR316 (A4-70) + NYLON WASHERS CUPHEAD WITH DOME HEAD NUT. - REFER TO SCHEDULE OF FINISHES

BEVEL AND COMPLETE PENETRATION BUTTWELDED MITRED JOINT USING INTERNAL LOCATING PLATES. (OR USE A 10mm THICK GR316 S/STEEL JOINING PLATE FOR MITRE.)

200x100x6 GR316 RHS S/STEEL SUPPORT MEMBER 6CFW VERTICAL & HORIZONTAL SECTIONS. TAPER ENDS TO PROFILES AS SHOWN - REFER TO DETAILS & SCHEDULE OF FINISHES

NOTE: CONTRACTOR TO ALLOW TO TRANSPORT DIMENSIONS. CONFIRM WITH SCC SUPERINTENDENT PRIOR TO DELIVERY TO SITE.



340mm x 340mm x 16mm GR316 S/STEEL BASEPLATE WITH 8mm THICK GUSSETS TO ALL FOUR CORNERS. 6-M20 (GRA4-70) S/STEEL ANCHORS WITH 300mm MINIMUM EMBEDMENT AND 6mm THICK ANCHOR PLATE AND NUTS. PROVIDE LEVELING NUTS AND 20mm NOMINAL NON SHRINK GROUT

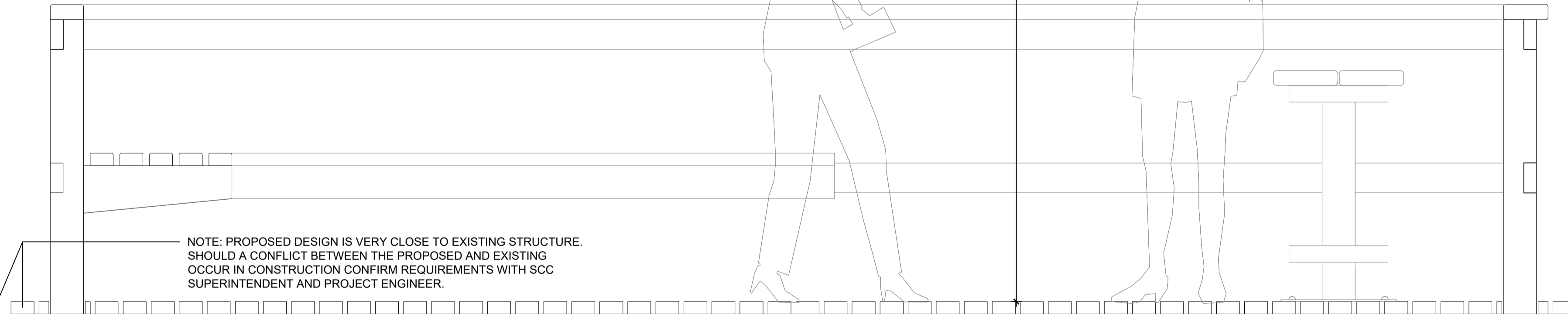
NOTE: ENSURE ANCHOR & ANCHOR PLATE ASSEMBLY FITS WITHIN FOOTING CAGE

200x100x6 GR316 RHS S/STEEL SUPPORT MEMBER - REFER TO DETAILS & SCHEDULE OF FINISHES

6000 x 2400 DEEP Min (INTO NATURAL GROUND) 32Mpa BORED PIER FOOTING.

6-N16 VERTICAL + R10-250 LIGS WITH 2-10 LIGS AT TOP (70 COVER) AS SHOWN

02 SHELTER FOOTING DETAIL
1:5 @A1/1:10@A3



NOTE: PROPOSED DESIGN IS VERY CLOSE TO EXISTING STRUCTURE. SHOULD A CONFLICT BETWEEN THE PROPOSED AND EXISTING OCCUR IN CONSTRUCTION CONFIRM REQUIREMENTS WITH SCC SUPERINTENDENT AND PROJECT ENGINEER.

NOTE: DEPENDANT ON GROUND CONDITIONS, CONTRACTOR COULD REQUEST TO USE 1200Wx400Dx5500 MIN LONG STRIP FOOTING REINFORCED WITH 5-N12 TOP + BOTTOM + R10-300 CR UGS (70 COVER), RATHER THAN 3x BORED PIERS.

340mm x 340mm x 16mm GR316 S/STEEL BASEPLATE WITH 8mm THICK GUSSETS TO ALL FOUR CORNERS. 6-M20 (GRA4-70) S/STEEL ANCHORS WITH 300mm MINIMUM EMBEDMENT AND 6mm THICK ANCHOR PLATE AND NUTS. PROVIDE LEVELING NUTS AND 20mm NOMINAL NON SHRINK GROUT

6-N16 VERTICAL + R10-250 LIGS WITH 2-10 LIGS AT TOP (70 COVER) AS SHOWN

USE LINERS AND DEWATER AS REQUIRED

6000 x 2200 DEEP 32Mpa BORED PIER FOOTING. SET TOP OF FOOTING 200mm BELOW FINISHED SURFACE LEVEL AS SHOWN.

COMPACTED SUBGRADE TO 95% M.M.D.D COMPACTION

01 SHELTER SECTION A-A
1:10 @A1/1:20@A3

NOT FOR CONSTRUCTION

B	04/06/2025	APPROVAL ISSUE						
A	30/08/2024	PRELIMINARY ISSUE						
Rv.	DATE	REVISIONS	DRAWN	CHECK 1	CHECK 2	SCALE		

Sunshine Coast
COUNCIL

Design & Placemaking Services | Landscape Architecture Services

MUDJIMBA BEACH ACCESS 124 SHELTER STRUCTURE
LANDSCAPE DOCUMENTATION

LANDSCAPE DETAILS

Project ID:
P-K7704

Sheet No. - Revision No.
L901 B

FILE:O:\Design\Apsa\P-K7704_Mudjimba Beach Access 124 All Abilities Ramp\03 Design\05 Landscape\AutoCAD\P-K7704_Mudjimba Beach Access 124 Shelter Structure.dwg DATE:03/06/2025 BY:jrb